



SAMU S.A. AND SAMU FOUNDATION

SAMU, S.A.

Legal status: ANONYMOUS SOCIETY

Nationality/country and date of registration: Spain - 25/01/1991

NIF: A41461781

Nº PIC UE: 890472320

EuropeAid identification number: ES-2021-GGH-2605194629

FUNDACIÓN SAMU

Legal status: FOUNDATION / non-profit. Protocol 3669/SE/635. Ley 10/2005 /31 de mayo de Fundaciones de la Comunidad Autónoma de Andalucía. BOJA 69 Sevilla, 23/06/98. Pág. 7.780

Nationality/country and date of registration: Spain - 1/06/1998

NIF: G41914243

Nº PIC UE: 896430642

EuropeAid identification number: ES-2021-GFV-2605194526

Quality certificate: ISO 9001 – 2015, ISO 14001 - 2015, UNE 166.002 – 2014 de I+D+I.

Av. Américo Vespucio. Edif. Cartuja, blq. E, Local 7 41092 Seville. Spain

Phone: +34 954 338 953 // +34 954 461 133

Email: samu_idi@samu.es

www.samu.es

Contact Person: JOSÉ A. TRUJILLO MARTÍNEZ , CEO Grupo SAMU

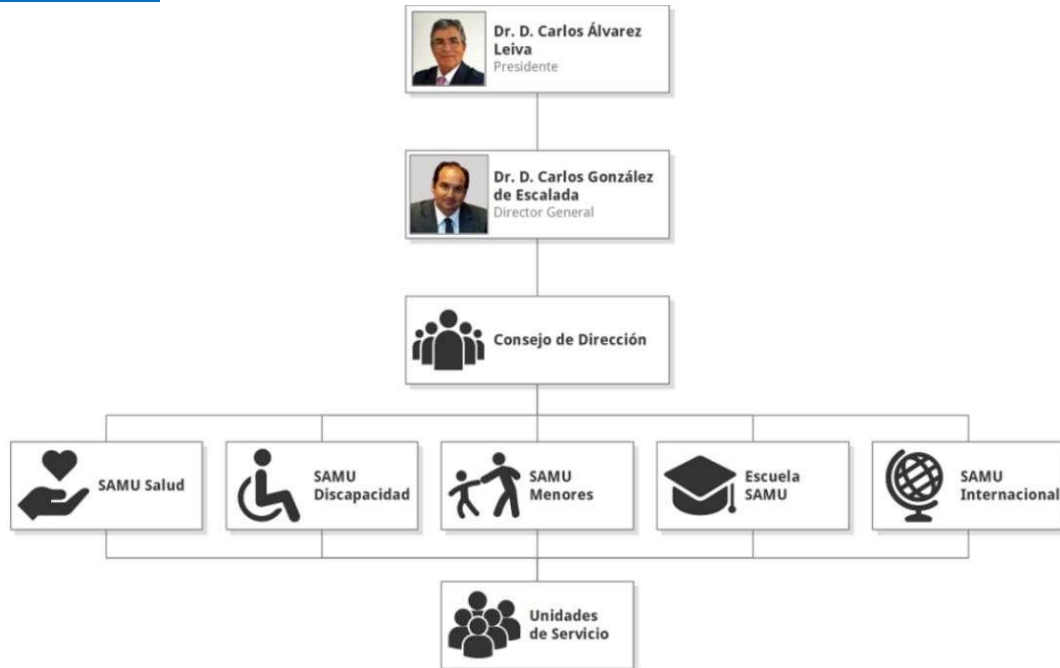
Email: jatrujillo@samu.es Tel.: +34 655 802 321

SAMU, based in Seville, is a pioneer in Spain with 40 years of experience in the health, social action, and emergencies sector. Starting its journey as a company that made medical coverage devices and a few years later with medicalized ambulances. Founded in 1981 by **Dr. Carlos Alvarez Leiva**, SAMU has 70 offices in six autonomous communities of Spain. Since the 1980s, hundreds of people from the professional health sector have been trained. Samu has a workforce of more than 2400 professionals and has trained more than 11.000 students in health and emergencies.

SAMU Foundation, non-profit entity, was created in 1998, with the aim of developing social action programs, and a wake-up to services for the care of vulnerable groups in the dependent elderly people, Immigrant Minors (MENAS), Intellectual Disability and Behavioral Disorders sectors, Brain Damage, Minors in Protection and Mental Health. Currently, Fundación SAMU has more than 50 centers throughout Spain, with projects dedicated to groups at risk of social exclusion. Offering services of Day Unit, Residences, Homes Floors, Emergency Temporary Reception Units and finally, School Support and Assistance Service to students with Needs Specific Support Educational.



STRUCTURE



SAMU HEALTH AND EMERGENCIES.

SAMU has been active improving the skillset of over 11.000 professionals in the health, social and humanitarian emergency fields. With a 17.000 square meter Emergency Training Centre - SAMU School-, offers a wide variety of training programs focused on emergency prevention, mitigation, response, and rehabilitation. SAMU has developed over 500 simulations and drills during near 40 years of operation, with the participation of local, national, and international organizations often collaborating from the civil and military sectors as well as bringing together private and public institutions. By analyzing the most relevant disasters throughout the years and participating in international expert's forums such a NATO, WHO, INSARAG, OCHA, UNHCR, amongst others, SAMU keeps up to date with the most recent consensus related to mass casualties and disaster management.

SAMU School also draws from many years of experience and international humanitarian aid and international development missions around the world, to Morocco, Philippines, Nepal, El Salvador, and Honduras to name only the most recent.

SAMU instructors are the best graduates from our master's in emergency, Catastrophe and Humanitarian Aid program, are active in the medical and rescue field and many are veterans from some of our international missions. The faculty apply on its everyday activities drills by adding elements of simulation, from a scenario and a script that define demanding and stressful situations by causing noise, fire, rain, resource shortages, manipulating lighting and temperature, interrupting services (water, light, and communications), creating uncertainty, and providing contradictory or incomplete information, among others.

Every drill, table-top exercise and simulation carried out by SAMU implies previous planning work by a Crisis Cabinet -following the Incident Command System structure- which determines the objectives, resources, calendar, and cost of the exercise which will be published on an Operational Document. This document will be used during the exercise by a Controlling Team to manage the situations and injects and test the effectiveness of mechanisms meant to coordinate the response by the participants.



After its conclusion there is always a debriefing with the participants to analyze the flow of information, resources, alerts, and coordination. Participants will fill a Lessons Learned questionnaire which will be used by the institutions to measure the level of success of the exercise and recommend future improvements for the exercise.

Beyond these daily and School oriented exercises, SAMU has experience carrying out wider spectrum exercises as is the case for the annual Crisis Task Force Exercise for 11 consecutive years where up to 600 professionals from multiple countries, sectors and specialties gather for several days of workshop training, drills followed by a long exercise which in all cases continues overnight, often covering 24hrs.

SAMU - SOCIAL SERVICES.

Fundación SAMU has created a network of 33 centers, serving more than 1.600 Immigrant Minors - **unaccompanied foreign minors (MENAS)**. It also maintains close contact with all those who have passed through its centers. SAMU serves to children in foster care throughout the national territory and, most of them, is in the pre-emancipation stage. In addition, there are no resources of enough age to welcome these children when they turn 18, hence the importance of training them in a trade that allows them to enter and stay in the labour market to be self-sufficient. Immigrant minors (MENAS) living in SAMU centers are not in an irregular situation since the system of protection of minors of the Junta de Andalucía does not discriminate between Spanish and foreign people: they are all minors. The MENAS are under the protection of the Andalusian Regional Government until the age of 18, although their situation at the age of that age is complicated. SAMU also collaborates with local social services in socio-labour integration activities of adult immigrants.

SAMU envisages current measures such as initial reception, coaching, mentoring, accompanying, and monitoring of migrants. It is envisaged to address those at risk of social exclusion, during the development and execution of all this innovation action, as well as working in the training (if necessary), job adaptation and post-insertion accompaniment. The purpose is to make an active intervention, in a personalized and appropriate way, to each collective or individual, bringing these closer to the training, education, social services etc., which the administrations offer and those they do not access because they do not have the skills necessary to use them as real means of social insertion. The only way to access these groups is through tutors, mediators, social workers who guide them, encourage, and attend them, give them the skills and abilities they do not have. It is also envisaged to address tutoring and mediation in social insertion, being aware of the social deficiencies people have, from the lack of social skills to the lack of standardized guidelines and schedules. In health matters, health professionals located in the neighborhoods will collaborate in preventive actions, emphasizing those aimed at minors, as well as promoting healthy living habits.

SAMU - TRAINING PROGRAMS.

SAMU has been active improving the skillset of over 11.000 professionals in the health, social and humanitarian emergency fields. With a 17.000 square meter Emergency Training Centre - SAMU School-, offers a wide variety of training programs focused on emergency prevention, mitigation, response, and rehabilitation.

The SAMU Emergency School aims to improve the level of training of emergency, emergency professionals and Social and Care Services and Management. We have a Health Professional Training Centre located in Gelves, Seville, pioneer in Spain, destined to three cycles of High School level. The school has trained to public servers (doctors, Nurses, Policemen, Army



members, Social Workers, Teachers, etc...) and private sector workers, including special Courses for Public Entities, including on Rights and Defense of Children, because SAMU and Foundation SAMU manage more 40 centers and they train to their staff. In addition to that, our health training offer includes master's degrees, supervised by the University of Seville or the Universidad CEU San Pablo, and Courses of recognized prestige.

The facilities include:

- 17,000 m2 built with 13 classrooms.
- Aula magna, library, delivery workshops and offices.
- American track, swimming pool, 4 × 4 driveway.
- Area of simulation of air accident and of railroad accidents.
- Confined, flooded, demolished areas, paper tower and rock climbing for in situ exercises.
- Heli surface and ambulance runway.

Some of the official courses, diplomas and trainings given are:

- Middle Degree of Sanitary Emergency (High School level)
- Nursing Assistance (High School level)
- Attention to People in Dependency Situation (High School level)
- Emergency Health (High School level)
- International Crisis Management Course
- Master's Degree in Prehospital Care, Catastrophes and Humanitarian Action of the University of Seville (former Emergency and Emergencies)
- University Expert in Medicine for Conflicts, Disasters and Catastrophes
- Crisis Task Force 2016 (CTF 2016)
- Patient Management in Hospital Emergency
- Practical Course on Biosecurity (Ebola Management)
- Course of Experimental Surgery and Surgical Rescue.
- Master's Degree in Management of Social and Health Services Centers
- Specialization Course in Children Centers
- Advanced Vocational Training in Social Integration Technician

Recently, the **SAMU School of Crafts and Trades in GELVES** has been inaugurated, a pioneering training program for people at risk of social exclusion with the aim of providing them with a trade and promoting their employment and social inclusion.

SAMU - INTERNATIONAL.

SAMU, beyond the Spanish territory, has offices in Morocco, (SAMU TANGER) the United States, (SAMU FOUNDATION) and Peru (SAMU IBEROAMÉRICA).

SAMU has participated in numerous international missions around the world in humanitarian and social emergency devices.

Regarding Latin America, we must indicate that we have an office about to open in Quito (Ecuador) in which we have great future projects.

In the US, in Washington, we are already established and operating with care services for unaccompanied minors and families from the Texas border. We are pioneers in serving this collective in the US.